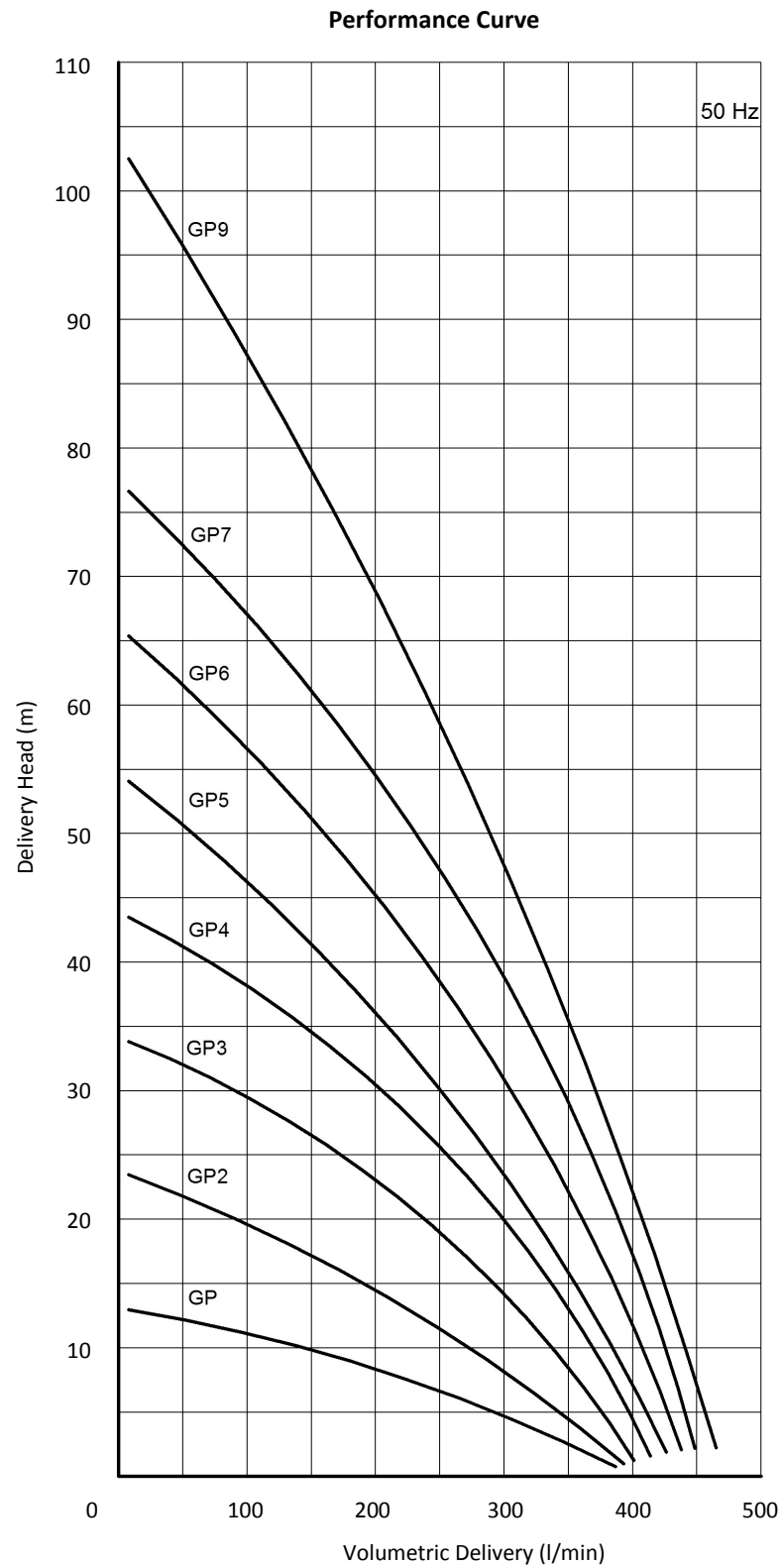


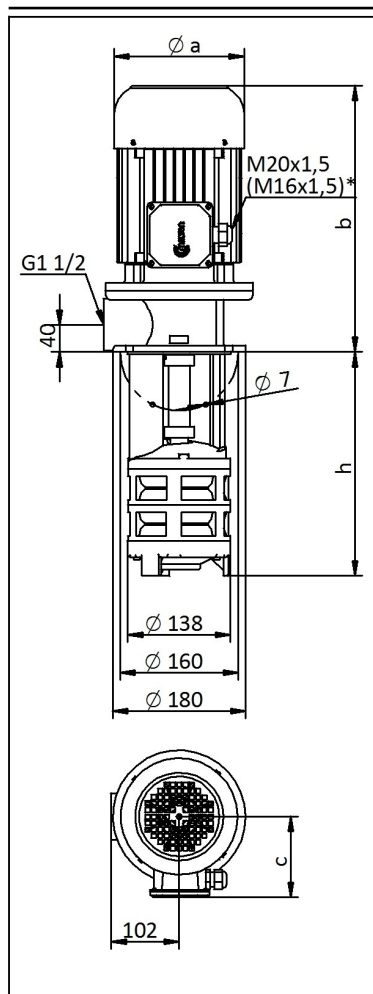


GP PUMP



Applications:

- Machine tools especially on grinding operations,
- Cutting, turning, milling, boring applications,
- Filtration systems,
- Circulation systems. GP Pumps are used for pumping of cutting / cooling fluids.



DIMENSIONS & NOMINAL VALUES

	Depth of immersion				Weight	Power	Voltage	Frequency	Rated current	Speed
TYPE	h (mm)	a	b	c	kg	kW	V(Δ/Y)	Hz	A	rpm
		mm								
GP /200	200	157	319	118	23	1.1	230/400	50	4.42/2.55	2840
GP /270	270				24.5					
GP /350	350				25.5					
GP /440	440				27					
GP /550	550				29					
GP -2/190	190	176	338	139	29	1.5	230/400	50	5.89/3.4	2850
GP -2/250	250				29.5					
GP -2/320	320				31					
GP -2/400	400				32					
GP -2/490	490				33.5					
GP -2/600	600				35.5					
GP -3/240	240	176	363	139	34	2.2	230/400	50	8.23/4.75	2870
GP -3/300	300				34.5					
GP -3/370	370				35.5					
GP -3/450	450				37					
GP -3/540	540				38.5					
GP -3/650	650				40					
GP -4/290	290	176	363	139	37	2.2	230/400	50	8.23/4.75	2870
GP -4/350	350				37.5					
GP -4/420	420				38.5					
GP -4/500	500				40					
GP -4/590	590				41.5					
GP -4/700	700				43					
GP -5/340	340	176	363	139	42	3	230/400	50	11.43/6.6	2840
GP -5/400	400				42.5					
GP -5/470	470				44					
GP -5/550	550				45					
GP -5/640	640				46.5					
GP -5/750	750				48.5					
GP -6/390	390	194	398	150	51	4	230/400	50	13.6/7.85	2860
GP -6/450	450				51.5					
GP -6/520	520				53					
GP -6/600	600				54					
GP -6/690	690				55.5					
GP -7/440	440	218	412	163	57.5	5.5	230/400	50	18.0/10.4	2890
GP -7/500	500				58					
GP -7/570	570				59					
GP -7/650	650				60.5					
GP -7/740	740				62					
GP -9/540	520	218	412	163	63.5	5.5	230/400	50	18.0/10.4	2890
GP -9/600	600				64					
GP -9/670	670				65					
GP -9/750	750				66.5					

* M16x1,5 cable gland is used on GP 1 pump.

** The performance curves are based on 1 mm²/s (cSt) kinematic viscosity values and 1000 kg/m³ density

*** Curve tolerance according to EN ISO 9906.

Fluid Specifications:

- Coolants,
- Cutting oils,
- Grinding oils,
- Water,
- Chip contains liquids (max. 8mm)
- Fluid temperature 0...80 °C
- Kinematic viscosity 1...90 mm²/s

Materials:

Pump body	: Cast iron - DIN GG 25
Volute	: Cast iron - DIN GG 25
Impeller	: Brass
Pump shaft	: Engineering stell - AISI 1040 (DIN C35)
Electric motor	: 3 phase induction motor
	2 pole, 2900 rpm
	Protection degree IP 55