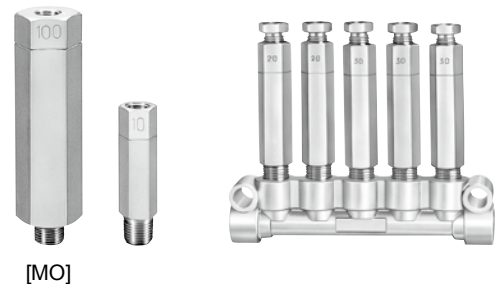


Metering valve

MO

Positive displacement injectors (PDI) for oil.
Nine different discharge volumes are available.



[MO]

Specifications

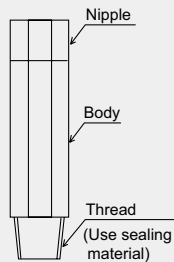
| | |
|---------------------------|---|
| Discharge volume | 0.03, 0.05, 0.1, 0.2, 0.3, 0.5mℓ/stroke |
| Operating pressure | 1.0MPa |
| Reset pressure | 0.3MPa |

Model

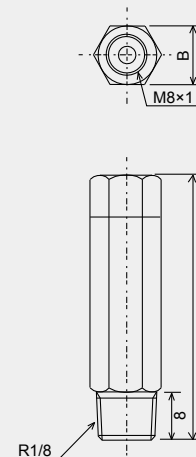
| Model | Part Number | Discharge volume (mℓ) | L (mm) | Mark | B |
|--------|-------------|-----------------------|--------|------|-------|
| MO-1 | 205070 | 0.01 | | 1 | |
| MO-3 | 205071 | 0.03 | 44.5 | 3 | |
| MO-5 | 205072 | 0.05 | | 5 | |
| MO-10 | 205073 | 0.1 | 53.5 | 10 | HEX12 |
| MO-20 | 205074 | 0.2 | | 20 | |
| MO-30 | 205075 | 0.3 | | 30 | |
| MO-50 | 205076 | 0.5 | 65 | 50 | |
| MO-100 | 205077 | 1 | 74.5 | 100 | HEX19 |
| MO-150 | 205078 | 1.5 | | 150 | |

Directions for use

- When installing the valve to a junction, screw it into place with a wrench applied to the valve body.
- When connecting the valve to tail tubing, turn bushing holding the nipple with a wrench.



Dimensional drawing



Related parts

