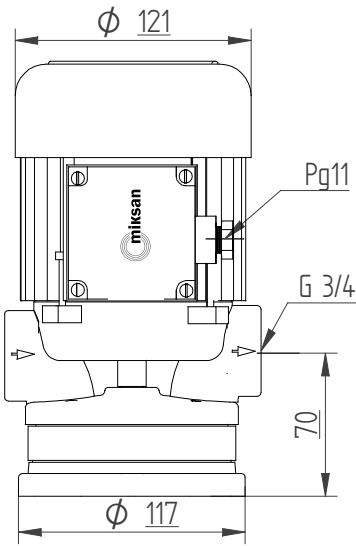
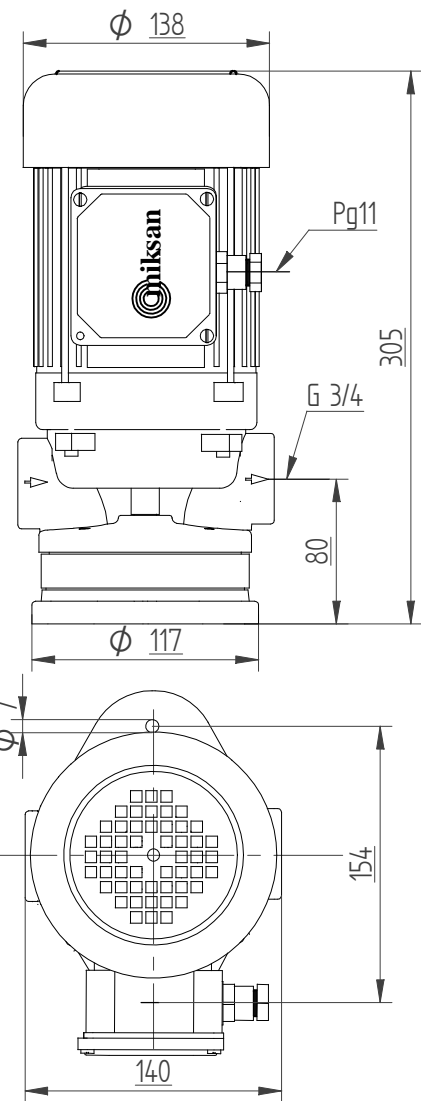


T 37



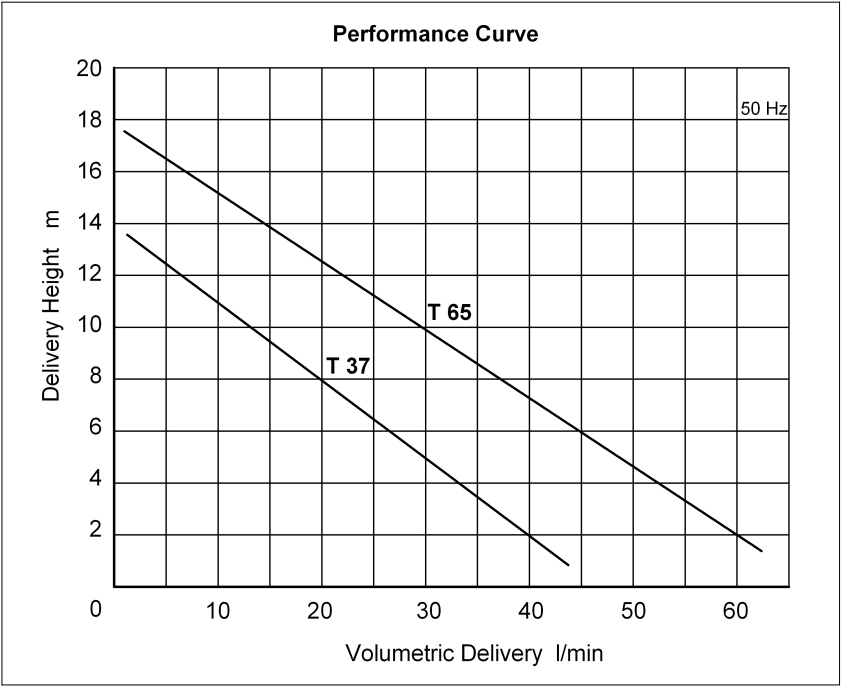
T 65



DIMENSIONS AND NOMINAL VALUES

	Volum. del. l/min	Pipe conn. G	Weight kg	Power kw	Voltage V(Δ/Y)	Fre- quency Hz	Rated current A	Revo- lution rpm
TYPE								
T 37	40	G 3/4	5.4	0.37	230/400	50	1.9/1.1	2820
T 65	60		10	0.63			2.2/1.3	

Volumetric delivery * is measured at 2m water height. (\pm % 10)



Kinematic viscosity: 90mm²/s
Operating Temperature Range : -50....+130 °C

PROPERTIES:

- T Pump series are designed for circulation of cutting and chemical fluids.
- They serve as cooling and lubrication units on machine tools and automatic sews, etc.
- The shaft of the T Pump is made of engineering steel.
- The main body and pump intake cover of standart T Pumps are cast iron.
- The impeller of the T Pumps is made of brass
- Standard T Pump has three-phase motor. On demand, they can be equipped with single-phase motor and other voltage, frequency.

THE DIMENSIONS OF THE PUMPS
CONFORMS TO EN 12157 SPECIFICATIONS.