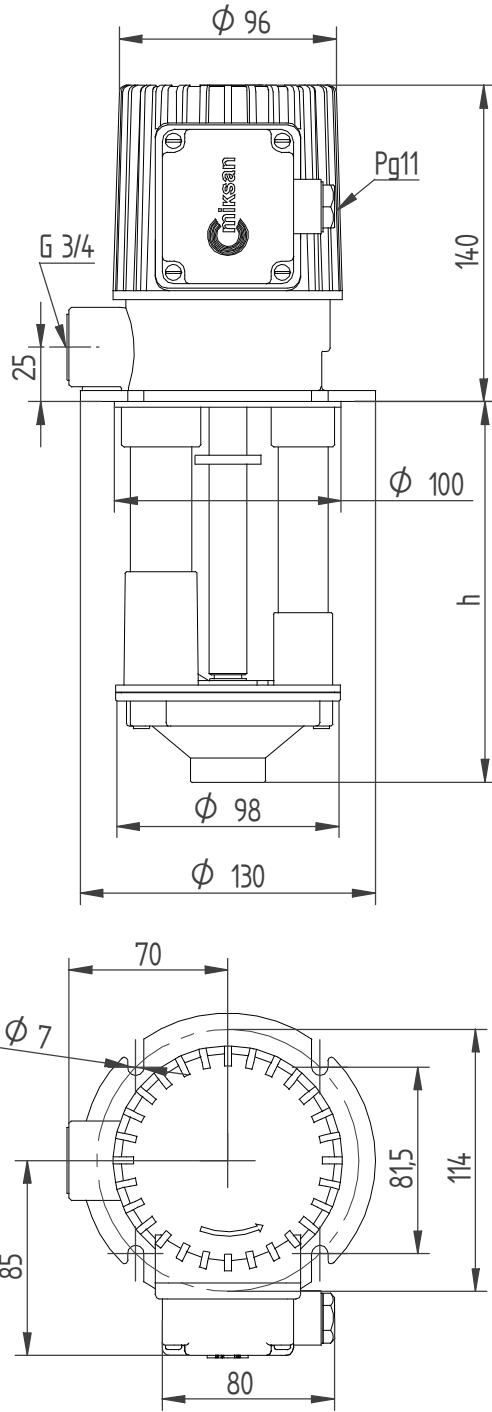


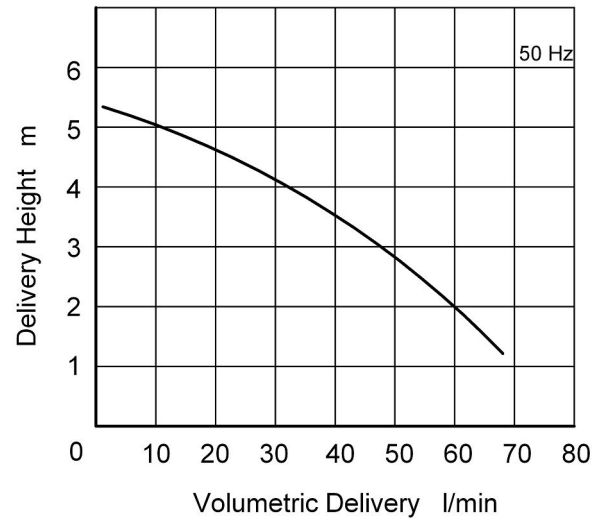
DIMENSIONS AND NOMINAL VALUES

| | Volum. del.(max) | Depth of immer. | Pipe conn. | Weight kg | Power kw | Voltage V(Δ/Y) | Fre- quency Hz | Rated current A | Revo- lution rpm |
|-------|---------------------|--------------------|---------------|--------------|-------------|-------------------|----------------------|-----------------------|------------------------|
| TYPE | l/min | h(mm) | G | kg | kw | V(Δ/Y) | Hz | A | rpm |
| BP 12 | 60* | 120 | G 3/4 | 3.9 | 0.09 | 230/400 | 50 | 0.48/0.28 | 2830 |
| BP 17 | | 170 | | 4.0 | | | | | |
| BP 22 | | 220 | | 4.3 | | | | | |
| BP 27 | | 270 | | 4.5 | | | | | |
| BP 35 | | 350 | | 5.0 | | | | | |

Volumetric delivery * is measured at 2m water height. (±%10)



Performance Curve



Kinematic viscosity : 90 mm²/s

Operating temperature : 0.....60 °C

PROPERTIES

- BP Pump series are designed for circulation of cutting and chemical fluids.
- They serve as cooling and lubrication units on machine tools and automatic sews , etc.
- The shaft of the BP is made of engineering steel. On demand, it can be equipped with stainless-steel.
- The main body, pump body, intake cover and impeller of BP pump are aluminium.
- Standart BP pump has a three-phase motor without cooling worm. On demand, it can be equipped with single-phase and other voltages and frequency.

DIMENSIONS OF THE PUMPS REFER TO STANDART SPECIFICATIONS EN 12157

Address: Oto Sanayi Sitesi Çelik sok. No:60

4. Levent/İSTANBUL-TURKEY

Tel: +90 212 284 64 00 [web: www.miksánmotor.com](http://www.miksánmotor.com)

Fax: +90 212 279 55 67 [e-mail: info@miksánmotor.com](mailto:info@miksánmotor.com)